

Case Management Professional Development Series

Engaging in ongoing professional development is an important practice for any practitioner. For those serving as case managers in higher education, it is important to seek out professional development opportunities on best practices in the field and to be well trained on the specific functions of higher education case manager. We have developed “BIT in a Box,” a comprehensive guide for implementing, developing, and enhancing a BIT/CARE team. The *BIT in a Box: Case Management Professional Development Series* is particularly useful for case managers who are looking to enhance their practices and increase their knowledge about their engagement with the BIT. To help BIT members and case managers streamline their processes, BIT in a Box also includes over 25 templates and sample forms and resources, allowing case managers to have pre-made, ready to go, case management and BIT/CARE team forms.

BIT in a Box is written and structured for the practitioner with the hope that it is user friendly, easy to digest, and most importantly applicable. This professional development series consists of 7 modules designed to enhance your professional knowledge on case management in higher education. Areas of focus include defining case management and the case management role, how case managers interact with and participate on the BIT, best practices for case management protocols and implementation of services, suicide and mental health, and application of case management concepts to case studies. This professional development series has grouped a mix of NaBITA’s resources including, research articles, tip sheets, demonstration videos, webinars, whitepapers, etc., so that you can quickly and easily access what you need to enhance your case management knowledge.

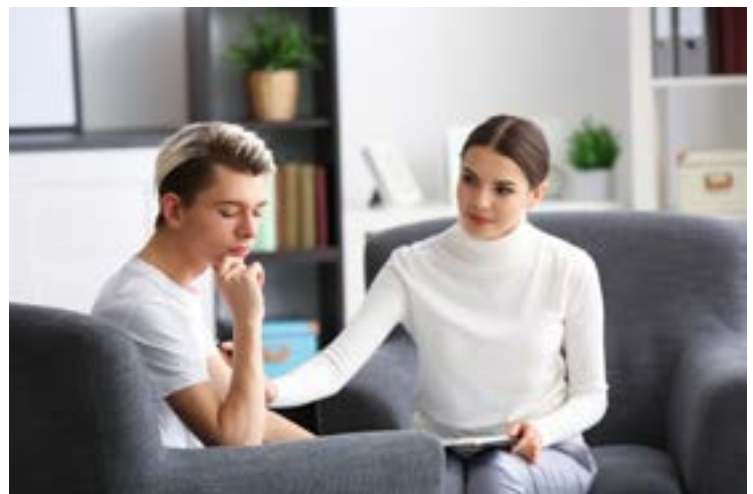
BIT in a Box Professional Development Bundle:

Products Included:

- A Practical Guide to Case Management in Higher Education (\$35)
- Case Management BIT Orientation Video (\$99 value)
- Case Management in Higher Education Webinar (\$349 value)
- 20 Minutes to Trained: Developing and Deploying Interventions (\$99 value)
- Back from the Hospital Webinar (\$279 value)
- Assessing and Supporting Students with Suicidal Ideation Video Series (\$349 value)
- Case Management Video Series (\$439 value)
- BIT in a Box – a comprehensive guide to understanding and implementing the NaBITA Behavioral Intervention Team Standards as well as over 20 template forms and resources.

Total Value: \$1,649

Bundle Price: \$999



Case Management Professional Development Series

Professional Development Training Schedule

Module	Resource
Module 1: Defining Case Management	Week 1: BIT in a Box Standard 13 Case Management in Higher Education Whitepaper, Resources with Feet Video
	Week 2: A Practical Guide to Case Management in Higher Education Chapter 1
Module 2: Clinical v. Non Clinical Case Management	Week 1: Tip of the Week: What's in a Name?, Podcast Episode 2
	Week 2: A Practical Guide to Case Management in Higher Education Chapter 2
Module 3: Case Management and the BIT	Week 1: BIT in a Box Standard 5, CM BIT Orientation Video, Podcast Episode 4
	Week 2: A Practical Guide to Case Management in Higher Education Chapter 7
Module 4: Case Management Practices and Protocols	Week 1: A Practical Guide to Case Management in Higher Education Chapter 4, Tip of the Week: Best Practices
	Week 2: Developing and Deploying Interventions 20MTT, JBIT Article
Module 5: Case Management Practices and Protocols	Week 1: Case Management Webinar
	Week 2: CM Article (free) Tip Of the Week: Case Management Caseload
Module 6: Suicide and Mental Health	Week 1: A Practical Guide to Case Management in Higher Education Chapter 8, Back from the Hospital Webinar
	Week 2: Assessing and Supporting Students with Suicidal Ideation Video Series
Module 7: Case Management in Practice	Week 1: JBIT Article, A Practical Guide to Case Management in Higher Education Chapter 6
	Week 2: Case Management Video Series, Case Management Whitepaper: Case Studies